



****AVAILABLE JUNE 2026** **FURNISHED****

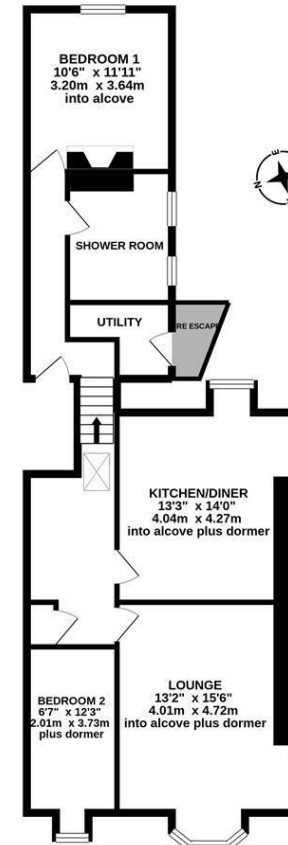
A top floor Victorian conversion apartment ideally located to the southern end of St George's Terrace, Jesmond. A stone's throw from the countless great shops and restaurants that Jesmond has to offer as well as West Jesmond Metro Station providing easy access to Newcastle City Centre, perfect for a professional couple or sharers alike!

Occupying the second floor of this sympathetic conversion and boasting close to 850 Sq ft, the accommodation briefly comprises: Communal entrance hall with stairs to all floors; private entrance hall, split-level with secure entry phone; 15ft lounge with west facing bay, including window seating and internal storage space; kitchen/diner with fitted wall and base units, work surfaces and appliances; stylish shower room with three piece suite including walk in shower; utility room with access to the rear fire escape; two bedrooms, positioned at opposite ends of the property both furnished and similar in size. With gas 'combi' central heating and available on a furnished basis, an early internal inspection is simply a must!

Available 11th June 2026 | £1,150pcm | Second Floor Conversion Apartment | 845 Sq ft (78.5 m2) | Two Bedrooms | 15ft Lounge With Dormer | Kitchen/Diner | Stylish Shower Room WC | Central Jesmond Location | GCH | Furnished | On Street Permit Parking | Council Tax Band: C | EPC Rating: Tbc



2ND FLOOR
845 sq.ft. (78.5 sq.m.) approx.



TOTAL FLOOR AREA : 845 sq.ft. (78.5 sq.m.) approx.

Whilst every attempt has been made to ensure the accuracy of the floorplan contained here, measurements of doors, windows, rooms and any other items are approximate and no responsibility is taken for any error, omission or mis-statement. This plan is for illustrative purposes only and should be used as such by any prospective purchaser. The services, systems and appliances shown have not been tested and no guarantee as to their operability or efficiency can be given.
Made with Metropix ©2020

£1,150 PCM

IMPORTANT NOTE: These particulars and the descriptions and measurements herein do not constitute representation and whilst every effort has been made to ensure accuracy, this cannot be guaranteed.

